

**Discover Comfort and Convenience at
3-Star JI Hotel in Jingdezhen
全季酒店(景德镇陶溪川店)**

Welcome to JI Hotel (Jingdezhen Taoxichuan Branch), 全季酒店(景德镇陶溪川店), your cozy retreat nestled at No. 476, Xinchang West Road, Zhushan District, Jingdezhen. Boasting 101 newly opened rooms since 2023, this hotel offers a perfect blend of modern comfort and convenience. Here's why we believe it's the ideal choice for our members:

Prime Location: Situated a mere 600 meters from Taoxichuan Creative Ceramic Art Avenue, a vibrant hub of ceramic art and culture, this hotel promises easy access to Jingdezhen China Ceramic Museum, Imperial Kiln Factory, and Ancient Kiln Folk Custom Expo. With a fifteen-minute stroll, you immerse yourself in the heart of Jingdezhen's renowned attractions.

Trusted Hospitality: Backed by H World Group Limited, a reputable name in the hospitality industry, and listed on NASDAQ in the United States, JI Hotel ensures a seamless stay experience. As the 6th ranked global hotel group by the prestigious American Hotels magazine, expect nothing short of excellence during your stay.

For an unforgettable stay in Jingdezhen, choose JI Hotel (Jingdezhen Taoxichuan Branch) where comfort, convenience, and quality converge. Book your stay now and experience hospitality at its finest.



King Size Single Bedroom

Size: 26 square meters

Bed: 1 large bed (1.8 meters)

Floor: 2nd-6th

Private bathroom, smart toilet, hairdryer, shower, towels, bath towels, slippers

TV with cable channels

Air conditioning

Manual and automatic curtains

No extra bed allowed

Pricing: Average \$72 USD /night, inclusive of breakfast
(Price subject to change)

Free Wi-Fi

Children Height under 1.4 meters free breakfast

Children Height 1.4 meters above US\$ 10/breakfast fee

Cooking not allowed in room

No Pets

Public washing machine



Standard Double Bedroom

Size: 26 square meters

Beds: 2 beds (1.2 meters each)

Floor: 2nd-6th

Amenities:

Private bathroom, smart toilet, hairdryer, shower, towels,
bath towels, slippers

TV with cable channels

Air conditioning, manual and automatic curtains

No extra bed allowed

Pricing: Average \$72 USD per night/including breakfast
(Price subject to change)

Free Wi-Fi

Children Height under 1.4 meters free breakfast

Children Height 1.4 meters above US\$ 10/breakfast fee

Cooking not allowed in room

No Pets

Public washing machine

Reservation Details:

At the time of reservation, we require 50% of the rental fee to hold the property. The remainder of the bill is to be paid upon arrival. Cancellation requires a 30-day notice to receive a 100% refund.

Check-in and Check-out:

Check-in time is 2:00 PM

Check-out time is 12:00 AM

CHOOSE YOUR DATES

Fill out the form below, and we will promptly confirm your reservation. Come and experience the tranquility of Jingdezhen!

Email: chinesesources.org@outlook.com

Our team from Chinesesources.org conducted an on-site visit to the hotel, inspecting all its facilities. We have included the following photos to provide you with a glimpse of the hotel's ambiance and some of its amenities. We want to assure you that our recommendations for hotels and apartments stem from genuine inspections and assessments. Your understanding of our dedication to providing reliable recommendations is greatly appreciated.

Photos of JI Hotel (Jingdezhen Taoxichuan Branch)



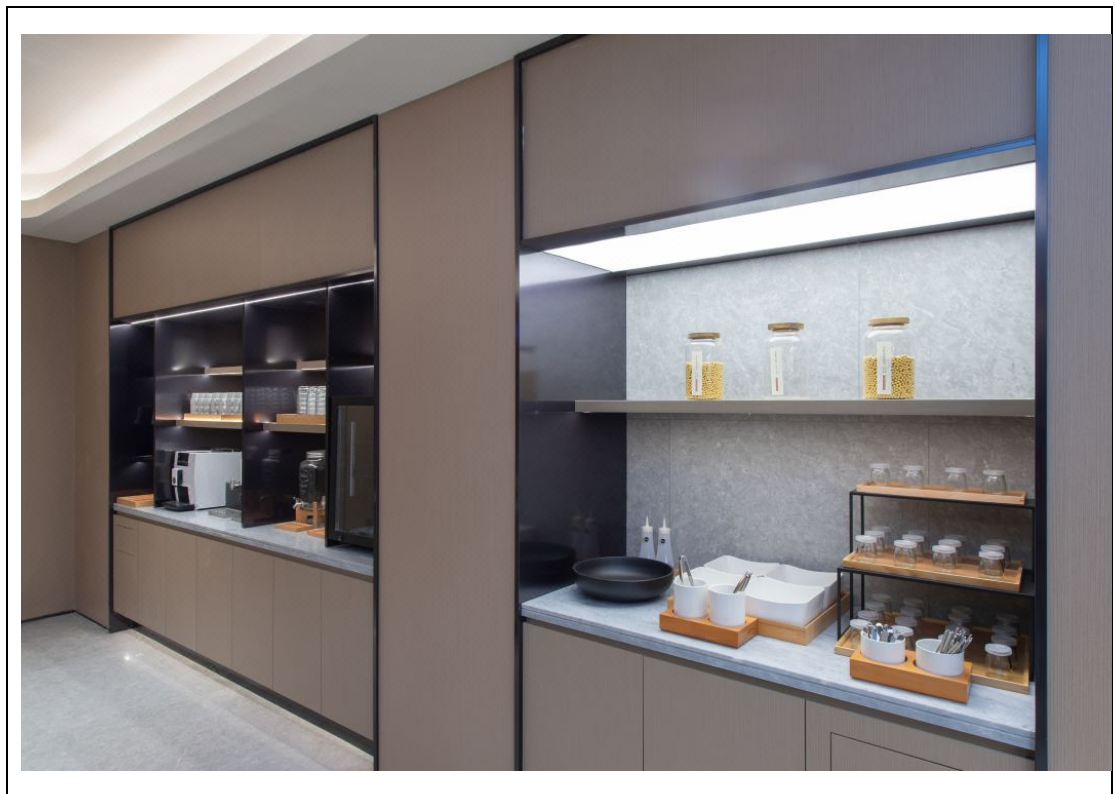
JI Hotel Gate



Building of JI Hotel



Guest Lobby of JI Hotel



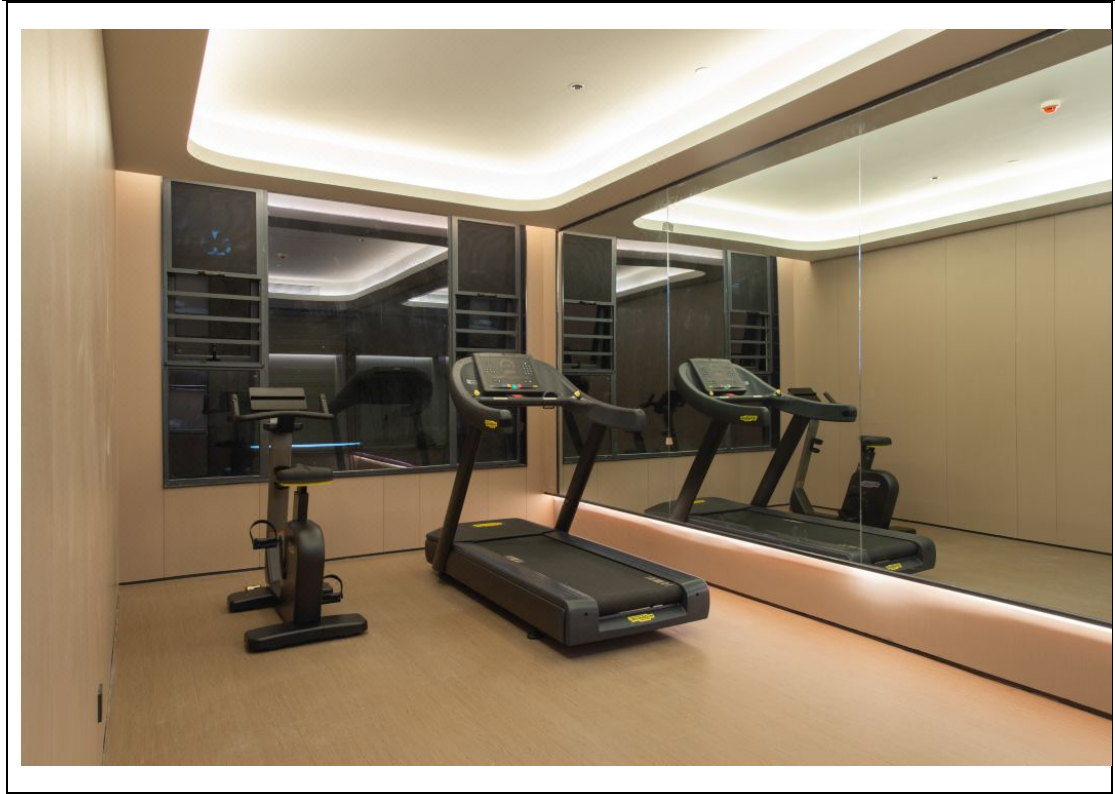
Drinking Supply of JI Hotel



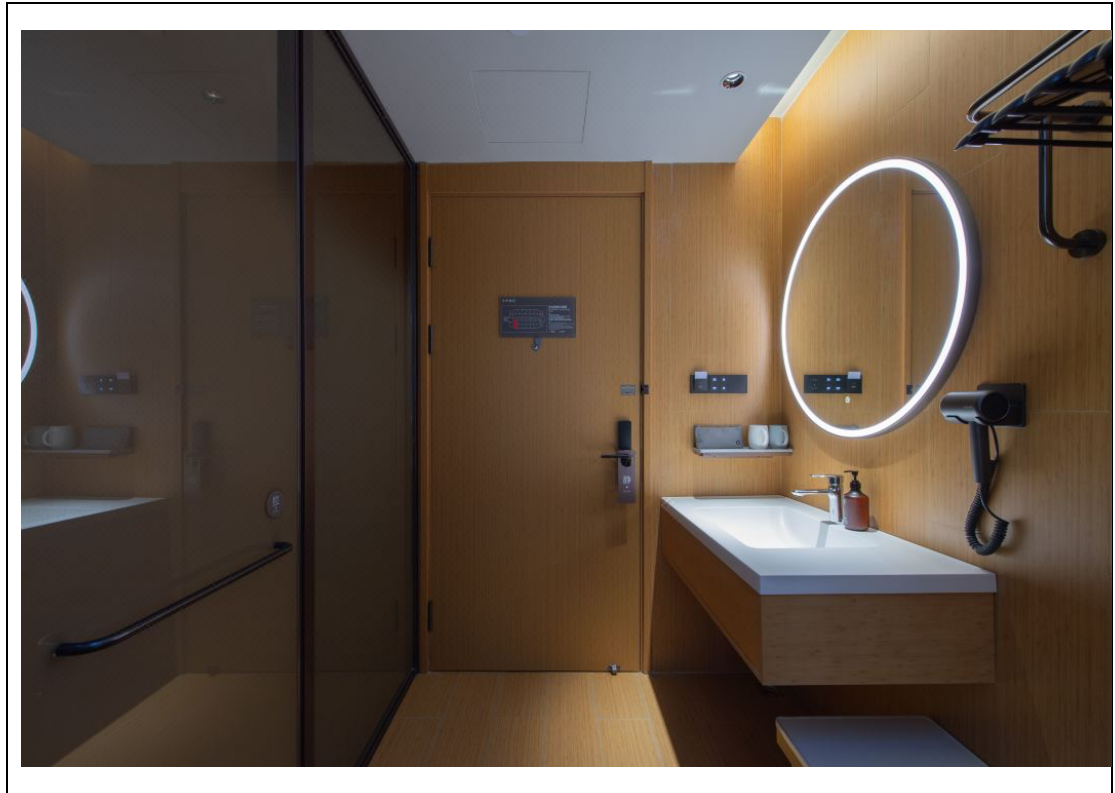
Guest Lounge of JI Hotel



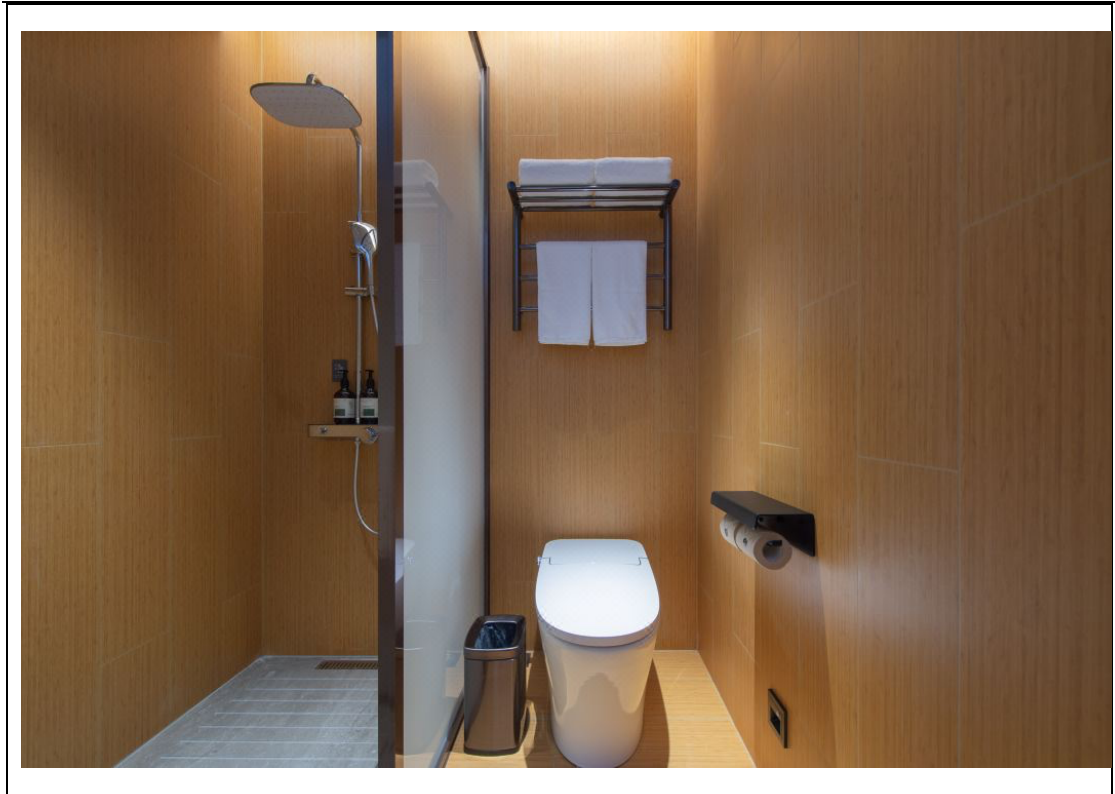
Visiting area of JI Hotel



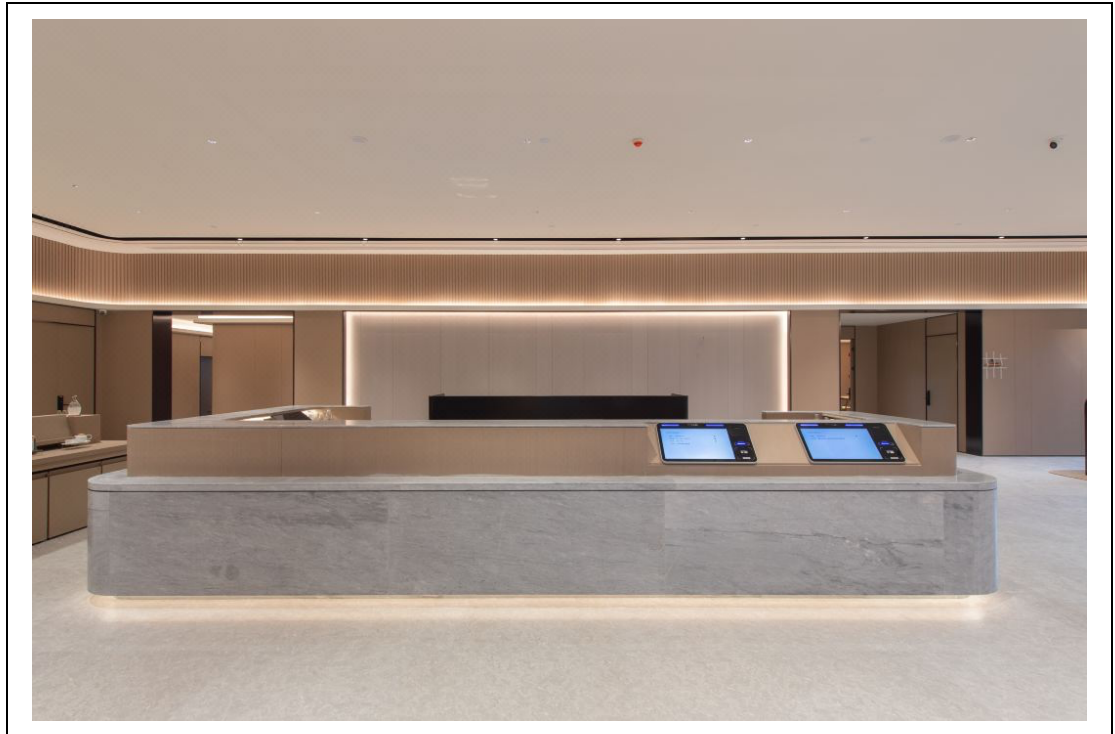
Gym room



Bathroom of JI Hotel



Bathroom of JI Hotel



Front Desk of JI Hotel