

Deluxe B&B Cottage for Long Term Rent Peach Blossom Mountain Villa

Case 1: Outlook B&B Cottage

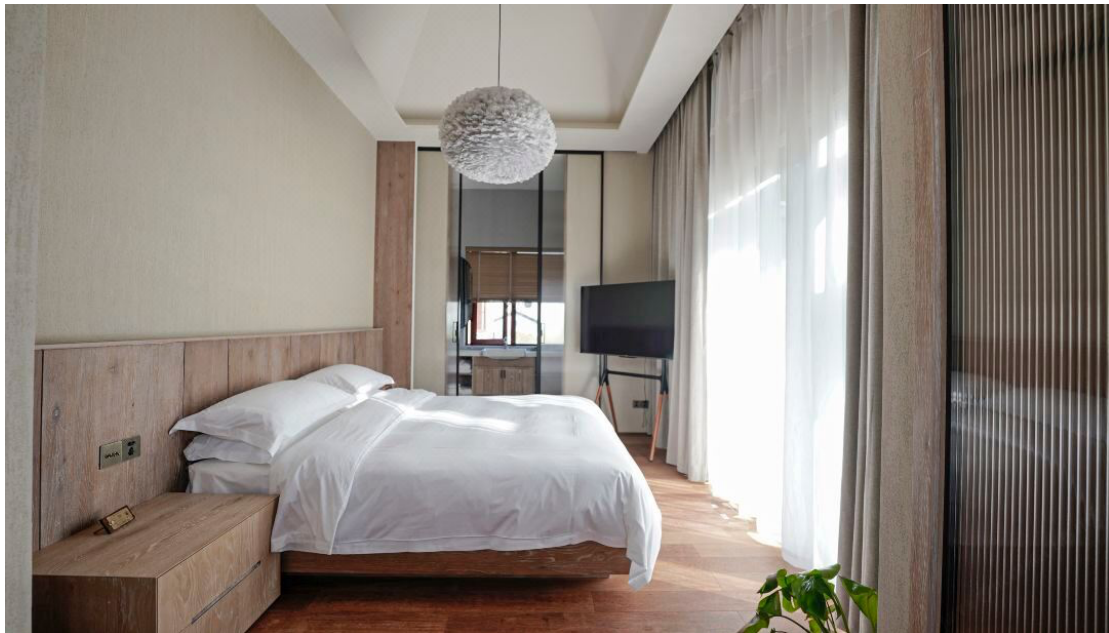
Location:

Our deluxe B&B cottages are nestled in the heart of Sanbao International Porcelain Valley, within the serene Peach Blossom Mountain Villa. Positioned in the tranquil Sanbao Scenic Area, it's just a half-hour drive from downtown Jingdezhen, the renowned porcelain capital of China. Nearby attractions include Taoxichuan Cultural and Creative Art Avenue (4.5 kilometers away), People's Square (7.30 kilometers), and the Ancient Kiln and Ceramics Museum (12 kilometers).



Features:

The cottages boast a trendy Huizhou-style architecture, spanning three floors. The main entrance faces Sanbao Street, while a mountain provides a scenic backdrop at the rear. Each cottage features rooftop balconies on the second and third floors, offering panoramic views. Inside, bright windows illuminate the rooms, adorned with Asian-inspired decor and local ceramic elements.



Current Offering:

We're currently **seeking four tenants to join a newly planned B&B cottage**, which will be furnished upon confirmation of rental bookings from four clients. This flexible approach allows us to tailor accommodations to suit individual needs and preferences.



Clientele:

Our accommodations cater to a diverse range of guests, including freelancers, digital nomads, travelers, businessmen, and students. Whether you're seeking a remote workspace or embarking on a ceramic journey, our premises offer a perfect blend of modern comfort and traditional aesthetics.



Budget-Friendly:

Our B&B Cottage is designed to be budget-friendly for freelancers, offering affordable rental options. By splitting costs among four tenants, individuals can enjoy private living spaces, bathrooms, and workrooms, along with shared facilities like a dining room and kitchen.

Amenities:

In addition to serving conventional breakfasts, we provide daily food supplies for meal preparation. Our accommodations feature amenities like laundry facilities, ensuring a comfortable and hassle-free stay. We also offer visa support and travel guidance to assist guests during their stay in China.



Community and Networking:

Beyond providing comfortable lodging, we encourage social interaction among guests, fostering a sense of community and facilitating networking opportunities. Guests can return to the comfort of our B&B after exploring Jingdezhen's attractions and engage in lively conversations with fellow travelers.

Case 2: Times B&B Townhouse

Location and Layout:

Times B&B Townhouse, also known as Peach Blossom Mountain Villa, is situated within the scenic Sanbao International Porcelain Valley. Spread across four floors, including a basement, ground floor, second floor, and third floor, each townhouse offers approximately 100 square meters of living space per tenant. The furnished accommodations include private bedrooms and bathrooms, alongside shared common areas such as kitchens, dining rooms, courtyards, and balconies.



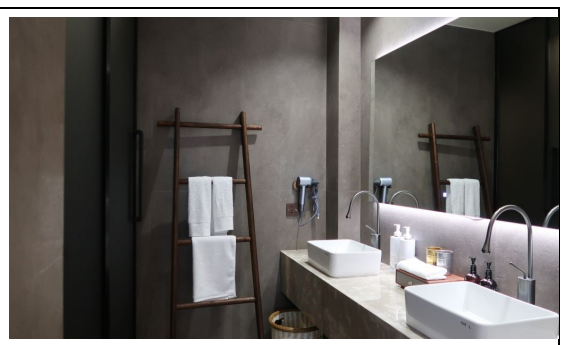
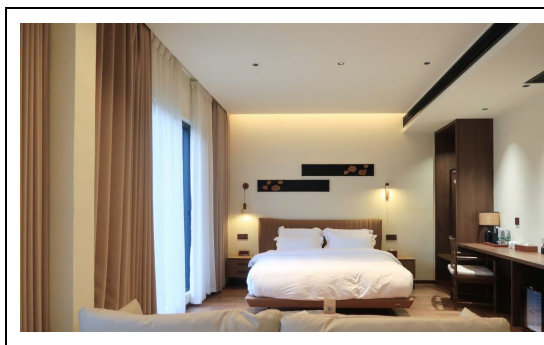
Ownership and Management:

Privately managed by ChineseSources.org, our townhouses are available for long-term stays, with a minimum rental period of six months. Guests enjoy greater independence and privacy compared to traditional bed and breakfast establishments.



Services and Pricing:

Equipped with self-catering facilities, our townhouses allow guests to prepare their own meals. Rental pricing is structured to accommodate long-term stays, with additional charges for utilities and services such as WiFi and food supplies. Each townhouse features digital locks for secure access and convenience.



Pricing Details:

Room Rental Price: \$1000 USD per month for single occupancy.

First Booking Deposit: \$3000 USD (to be paid upon reservation).

Monthly Rent Payment: \$1000 USD to be paid upon check-in.



Utilities:

Water Bill: \$30 USD per month.

Electricity Bill: Based on consumption.

WiFi Connection Fee: \$30 USD per month.

(WiFi coverage available in all rooms and public areas.)



Amenities:

Home-Made Breakfast: Provided with booking.
Food Supply: Available upon request and booking.

Co-Booking Requirement:

Minimum of 4 people required for co-booking.

Check-In Timeframe:

Please note that your check-in time is scheduled 6 months after having your deposit payment.



Reservation Details:

To reserve your spot in our deluxe B&B cottages, we require a rental deposit of \$3000 USD, with the monthly bill payable upon arrival. Cancellations must be made with a 60-day notice to receive a full refund. Contact us by email below to confirm your reservation and experience the tranquility of Jingdezhen with us!

Email: chinesesources.org@outlook.com